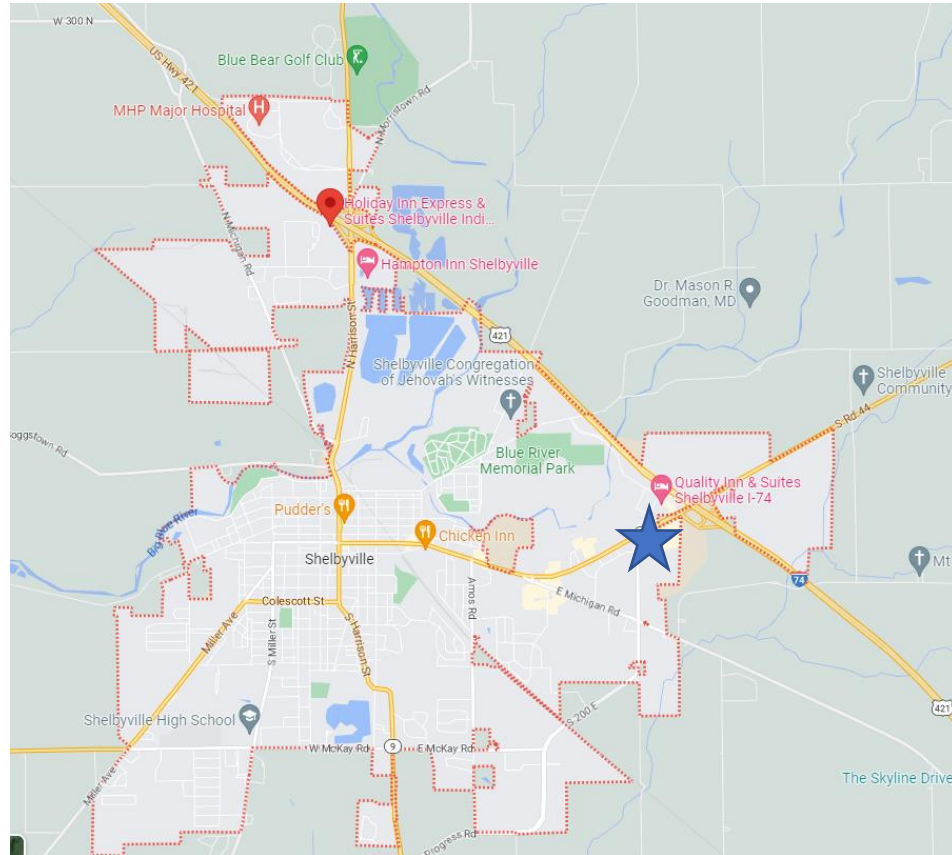


# Shelbyville Marketplace

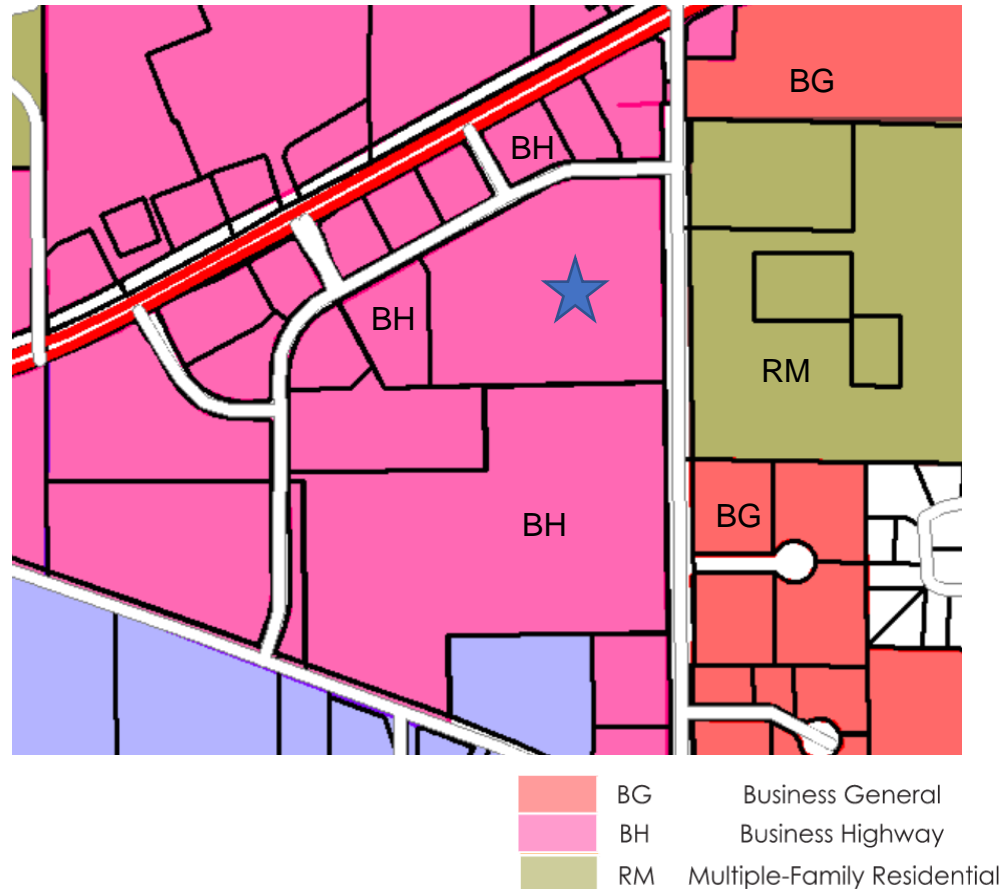


Near I-74 and SR 44



SW corner of Marketplace Boulevard and Progress Road

# Shelbyville Marketplace

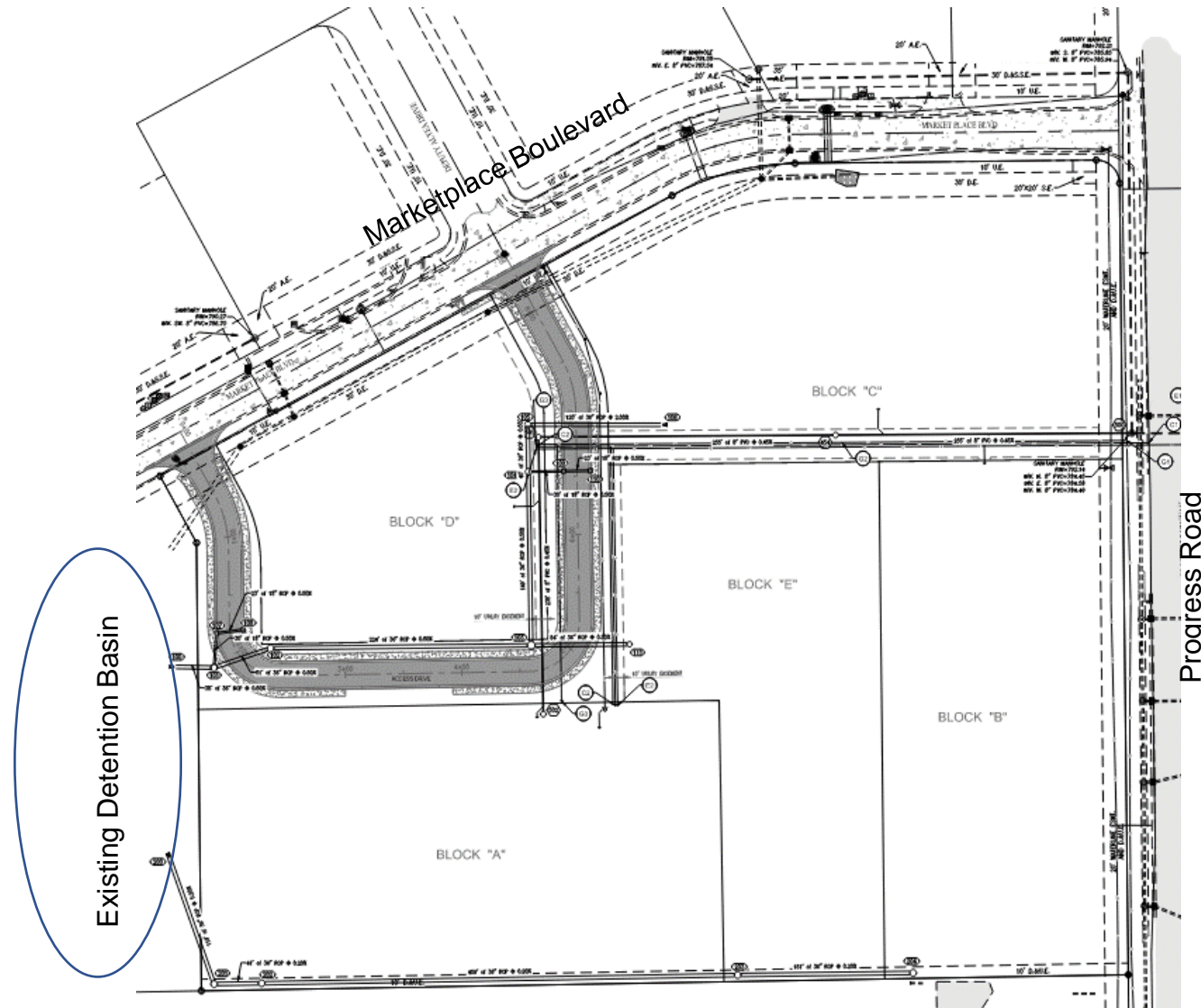


SW corner of Marketplace Boulevard and Progress Road



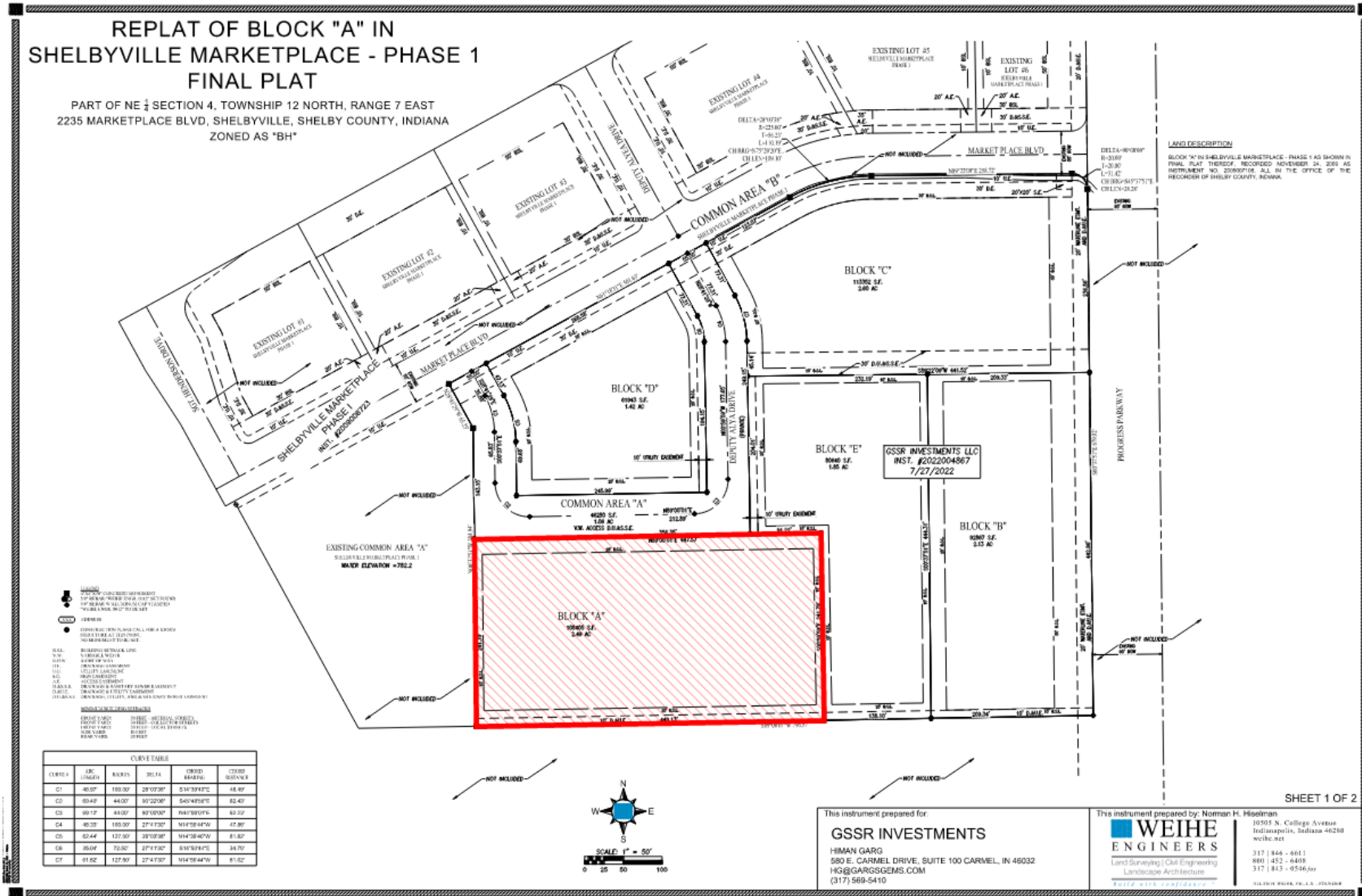
ALLAN H. WOOD, F.R.C., F.T.C. (EDS)

# Shelbyville Marketplace Phase 1 - Infrastructure



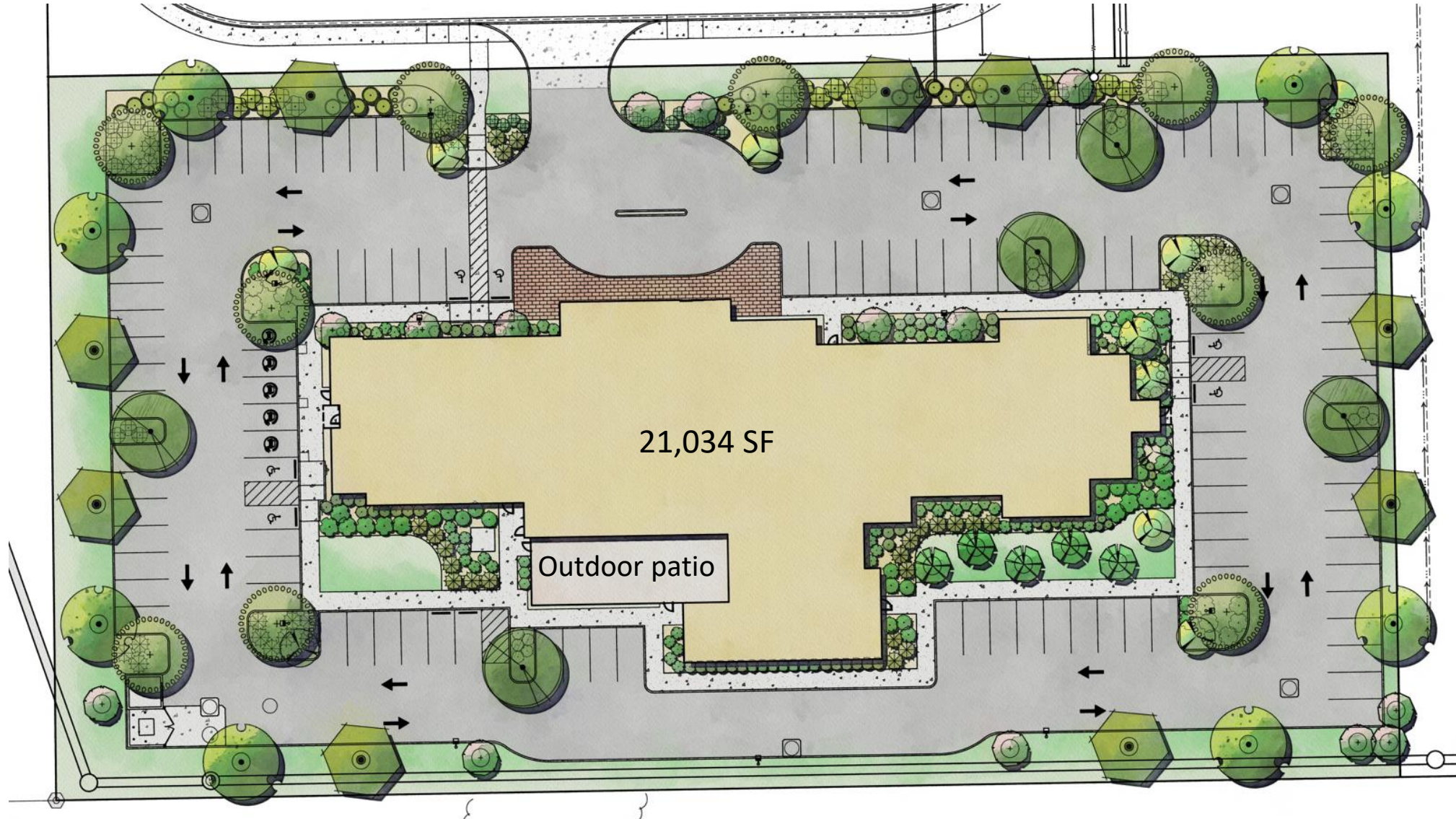
Questions?

# Shelbyville Marketplace Phase 1 – Block A (Marriot Hotel)





# Shelbyville Marketplace - Marriot Hotel



Parking :  
113 spaces required  
(1/sleeping unit)  
125 provided



# Shelbyville Marketplace - Marriott Hotel

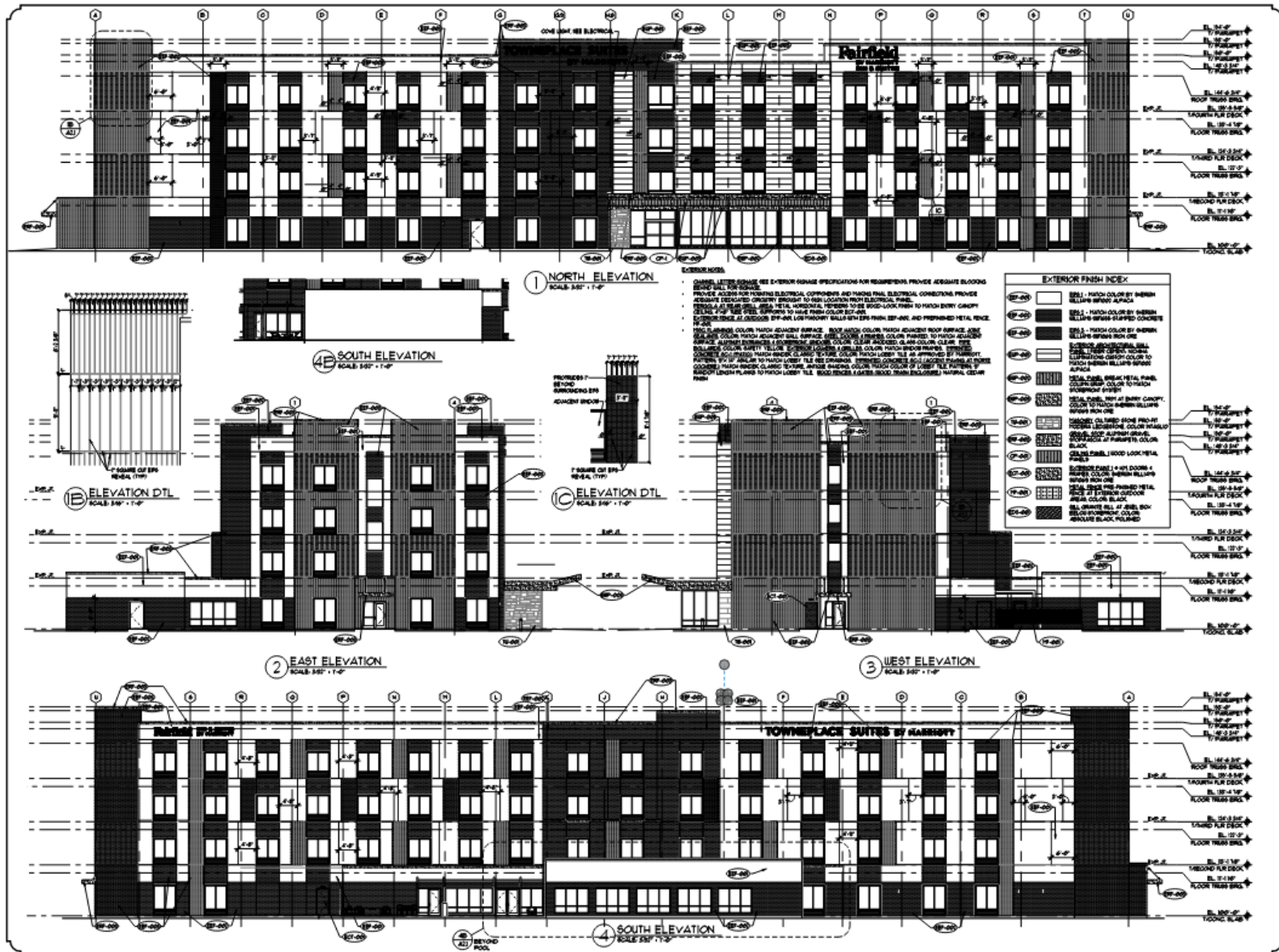


# Shelbyville Marketplace - Marriott Hotel





# Shelbyville Marketplace - Marriot Hotel



### ARCHITECTURAL GROUP III

**TOWNPLACE**  
SOUTH  
HARTFORD  
**FAIRFIELD**  
HARTFORD  
HARTFORD  
JOB TITLE

**TOWNEPLACE SUITES +  
FAIRFIELD INN & SUITES**  
SHELBYVILLE, IN  
A NEW 115 ROOM HOTEL

JOB NO.  
22133

DATE  
03/29/23

REVISIONS

PRELIMINARY NOT  
FOR CONSTRUCTION

SHEET NO.  
**A2.**  
EXTERIOR  
ELEVATIONS

# Shelbyville Marketplace - Marriot Hotel



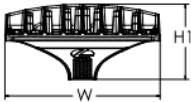
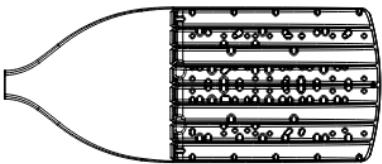
d"series

## D-Series Size 2 LED Area Luminaire



### Specifications

EPA:	1.06 ft <sup>2</sup> (0.10 m <sup>2</sup> )
Length:	40.59" (103.1 cm)
Width:	16.76" (42.6 cm)
Height H1:	8.11" (20.6 cm)
Height H2:	3.96" (10.1 cm)
Weight:	46 lbs (20.9 kg)



Catalog Number	
Notes	
Type	

Hit the Tab key or mouse over the page to see all interactive elements.

### Introduction

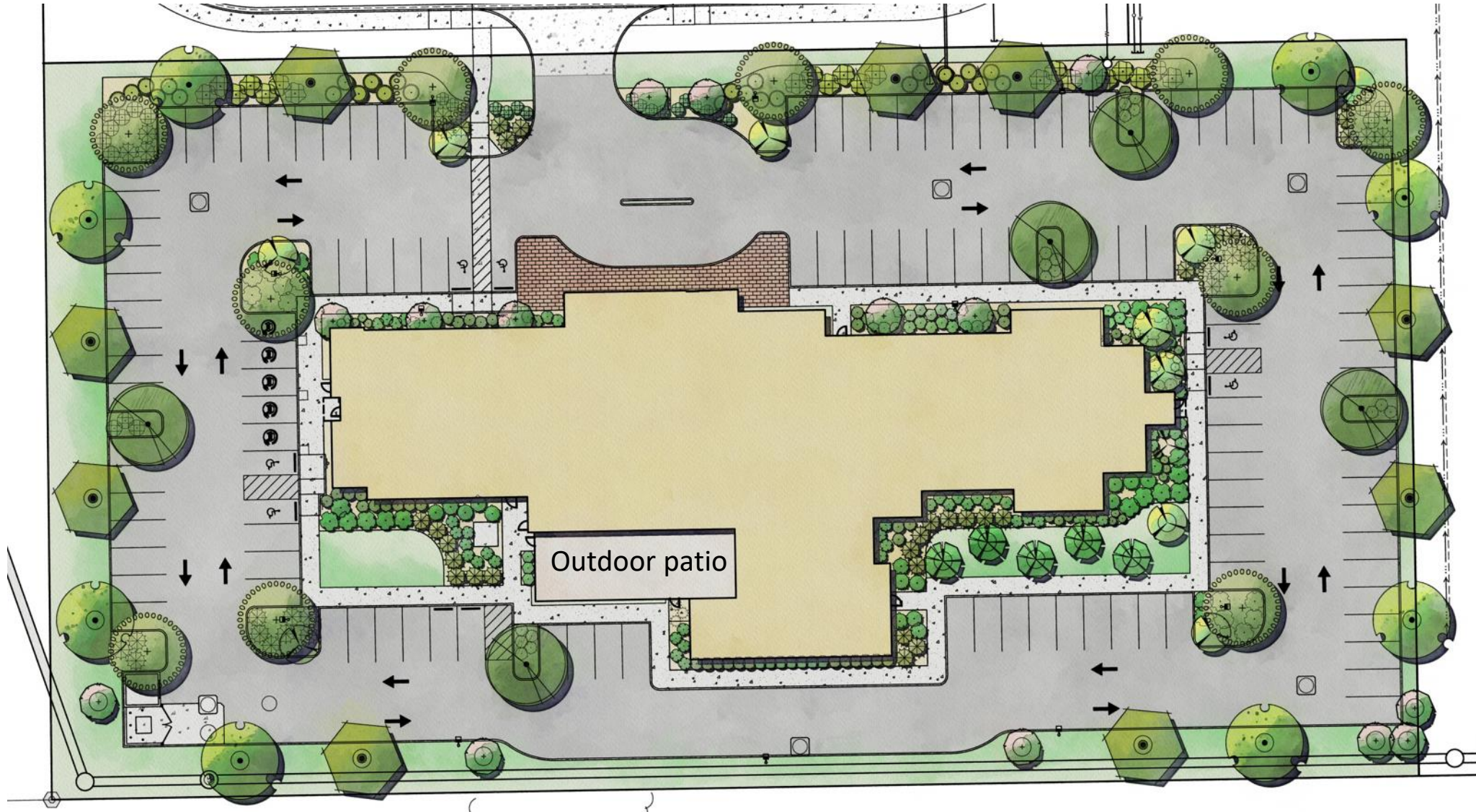
The modern styling of the D-Series features a highly refined aesthetic that blends seamlessly with its environment. The D-Series offers the benefits of the latest in LED technology into a high performance, high efficacy, long-life luminaire.

The outstanding photometric performance results in sites with excellent uniformity, greater pole spacing and lower power density. D-Series outstanding photometry aids in reducing the number of poles required in area lighting applications with typical energy savings of up to 80% vs. 1000W HID and expected service life of over 100,000 hours.

Pole heights 25'  
(40' allowed site interior)

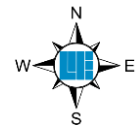


# Shelbyville Marketplace - Marriot Hotel



Questions?

**WEIHE**  
ENGINEERS  
Land Surveying | Civil Engineering  
Landscape Architecture  
*Build with confidence.*

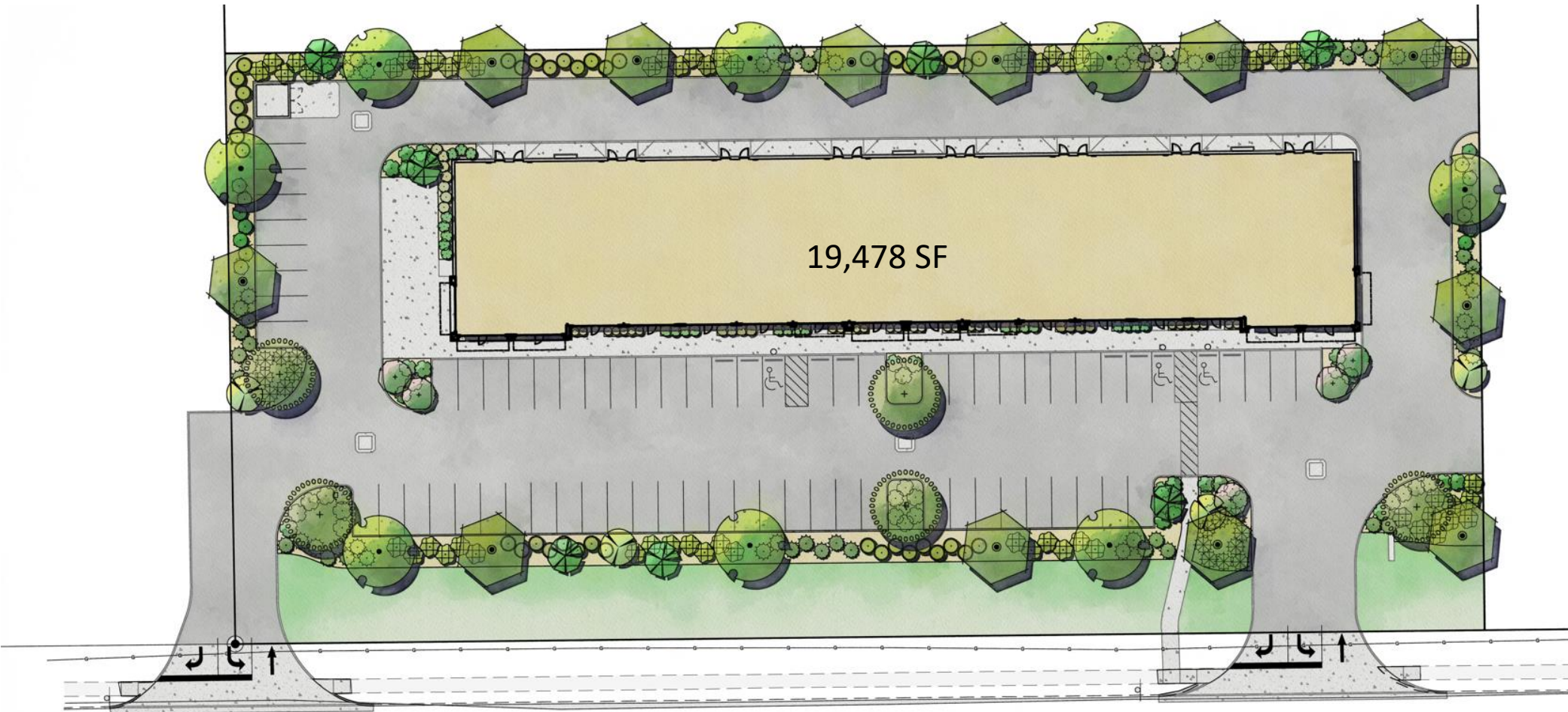




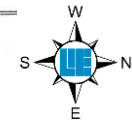


# Shelbyville Marketplace - Retail

Parking :  
65 spaces required  
(1/300 SF)  
71 provided



Progress Road



# Shelbyville Marketplace - Retail



Shelbyville Marketplace

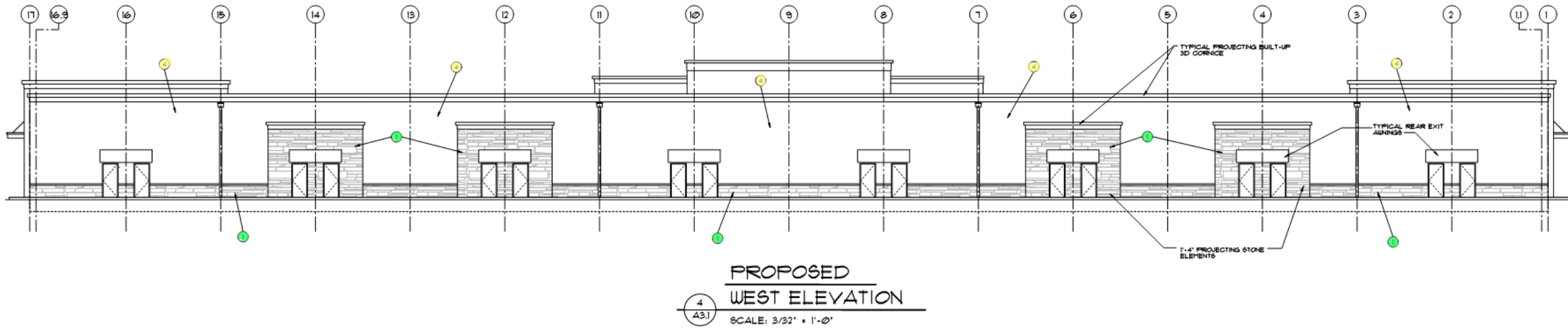


*Mack Architects*

**WEIHE**  
ENGINEERS  
Land Surveying | Civil Engineering  
Landscape Architecture  
*Build with confidence.*



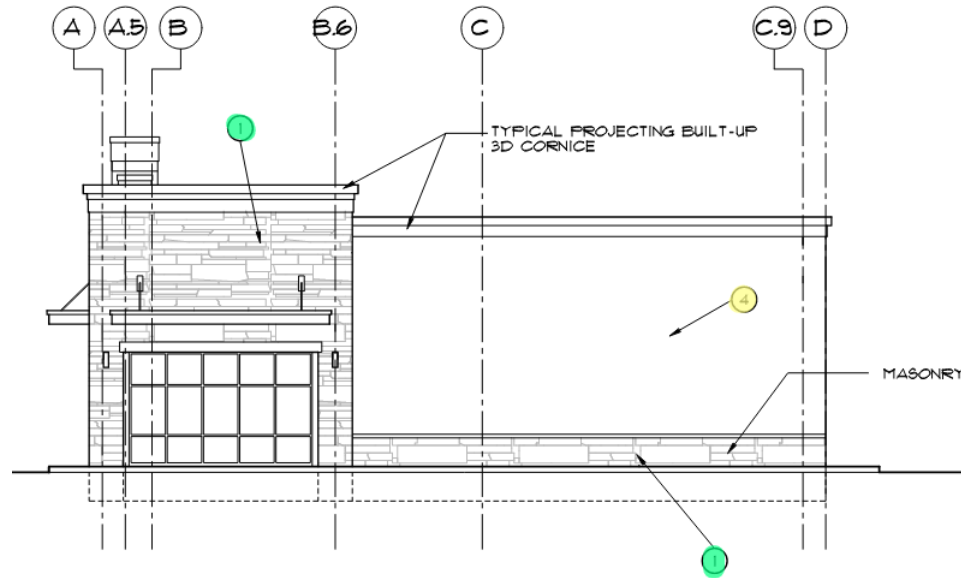
# Shelbyville Marketplace - Retail



## LIST OF EXTERIOR FINISHES

- ① EXTERIOR STONE VENEER
- ② EIFS SYNTHETIC STUCCO SYSTEM W/ REVEALS AS SHOWN
- ③ EXTERIOR INSULATED METAL PANELS, REVEALS AS SHOWN
- ④ SMOOTH GROUND FACE CMU WITH EXPOSED AGGREGATE, STACKING BOND

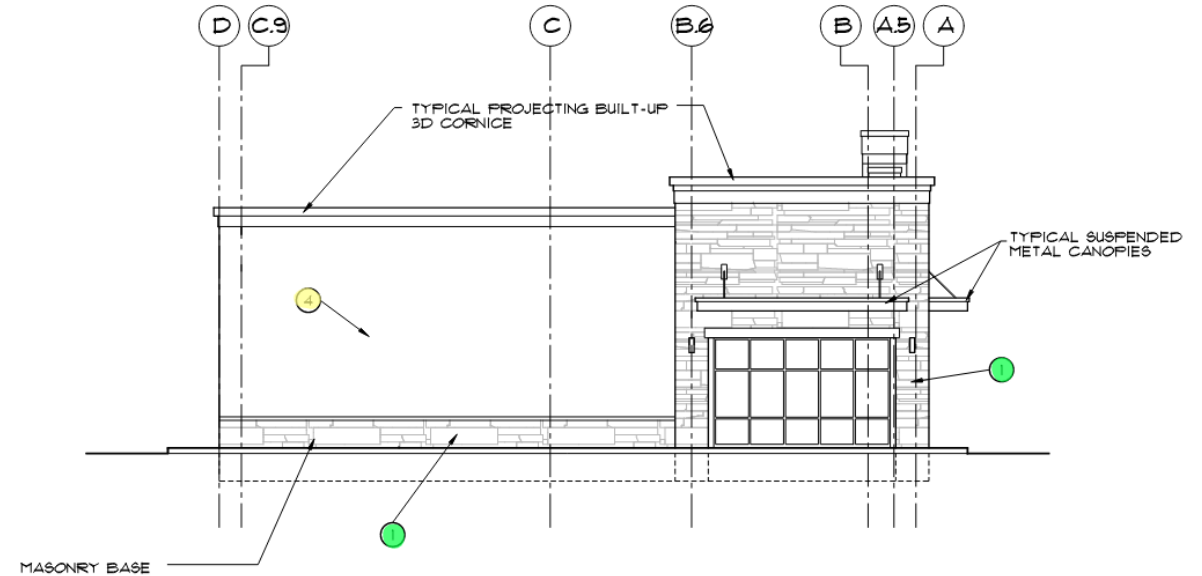
# Shelbyville Marketplace - Retail



## PROPOSED NORTH ELEVATION

3  
A3.1

SCALE: 3/32" = 1'-0"



## PROPOSED SOUTH ELEVATION

2  
A3.1

SCALE: 3/32" = 1'-0"

### LIST OF EXTERIOR FINISHES

- ① EXTERIOR STONE VENEER
- ② EIFS SYNTHETIC STUCCO SYSTEM W/ REVEALS AS SHOWN
- ③ EXTERIOR INSULATED METAL PANELS, REVEALS AS SHOWN
- ④ SMOOTH GROUND FACE CMU WITH EXPOSED AGGREGATE, STACKING BOND

# Shelbyville Marketplace - Retail



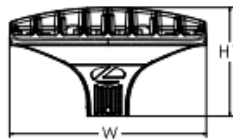
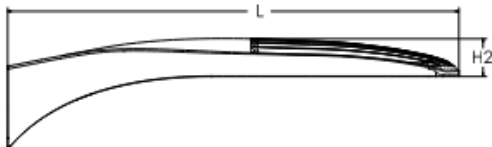
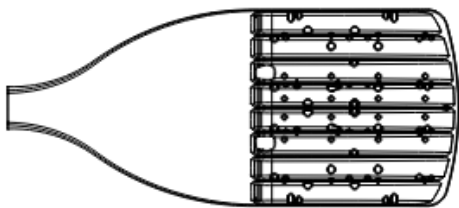
## D-Series Size 1 LED Area Luminaire



d#series

### Specifications

EPA:	0.69 ft <sup>2</sup> (0.06 m <sup>2</sup> )
Length:	32.71 " (83.1 cm)
Width:	14.26 " (36.2 cm)
Height H1:	7.88 " (20.0 cm)
Height H2:	2.73 " (6.9 cm)
Weight:	34 lbs (15.4 kg)



Catalog Number	
Notes	
Type	

Hit the Tab key or mouse over the page to see all interactive elements.

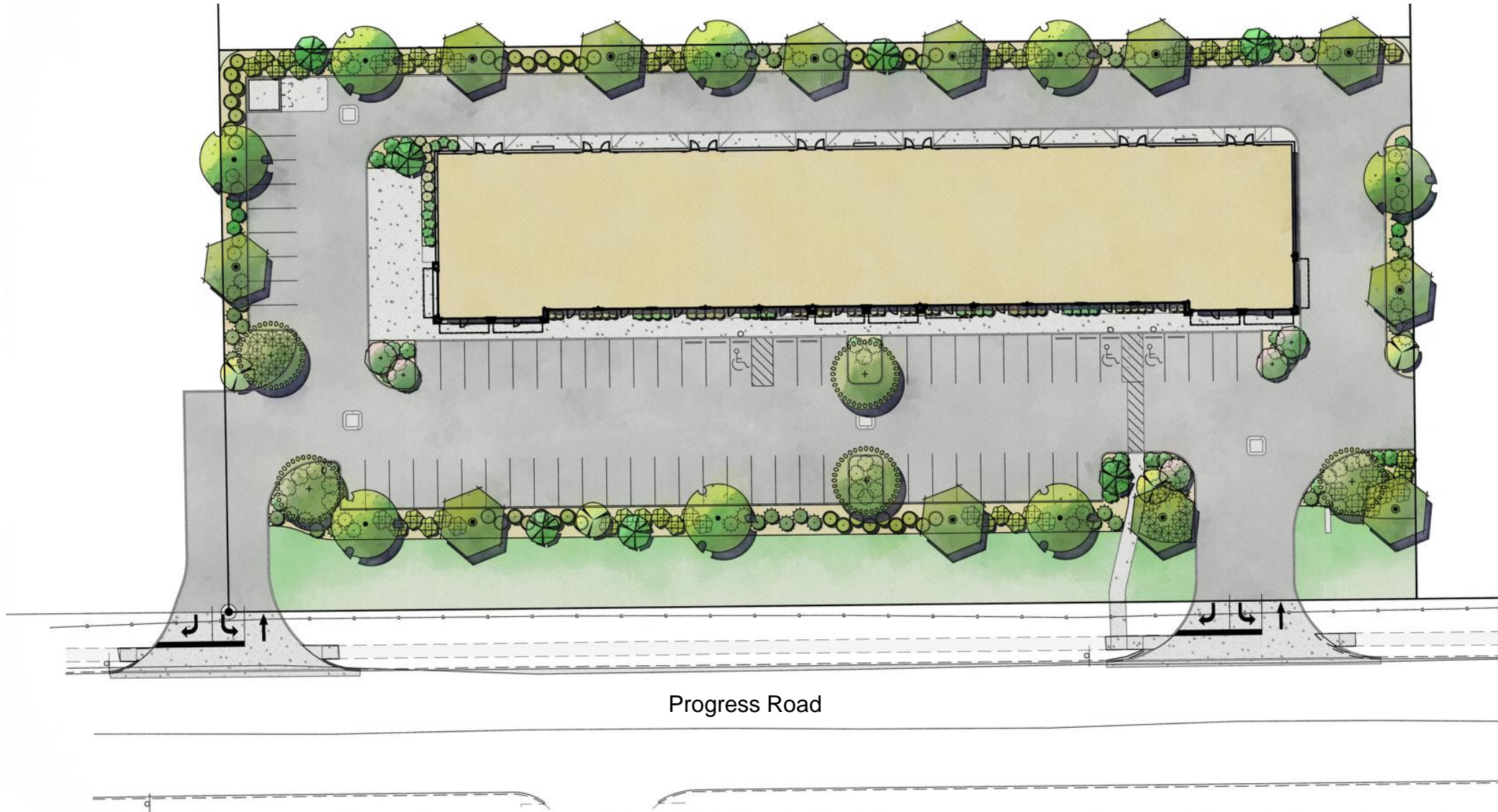
### Introduction

The modern styling of the D-Series features a highly refined aesthetic that blends seamlessly with its environment. The D-Series offers the benefits of the latest in LED technology into a high performance, high efficacy, long-life luminaire.

The photometric performance results in sites with excellent uniformity, greater pole spacing and lower power density. D-Series outstanding photometry aids in reducing the number of poles required in area lighting applications with typical energy savings of 65% and expected service life of over 100,000 hours.



# Shelbyville Marketplace - Retail



Questions?

**WEIHE**  
ENGINEERS  
Land Surveying | Civil Engineering  
Landscape Architecture  
*Build with confidence.™*

