

# BEAR RUN:

TEXT AMENDMENT  
TO THE EXISTING LEWIS PUD

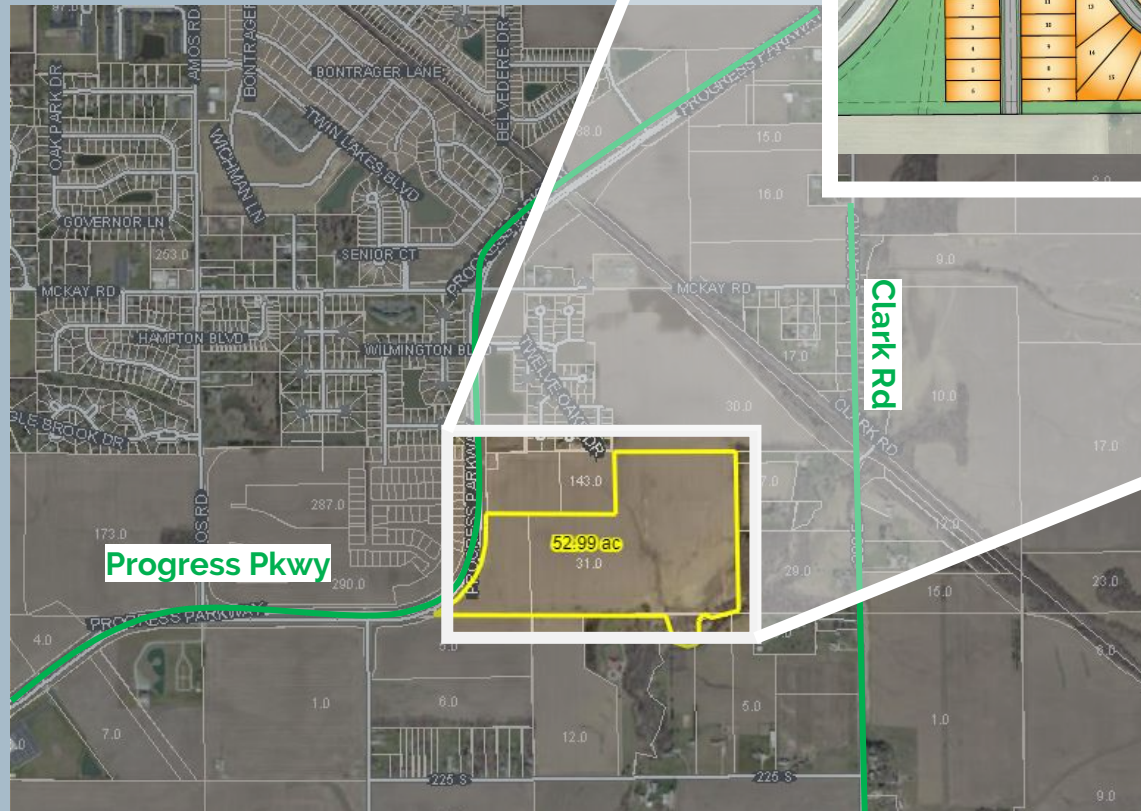
JANUARY 22, 2024



M/I HOMES

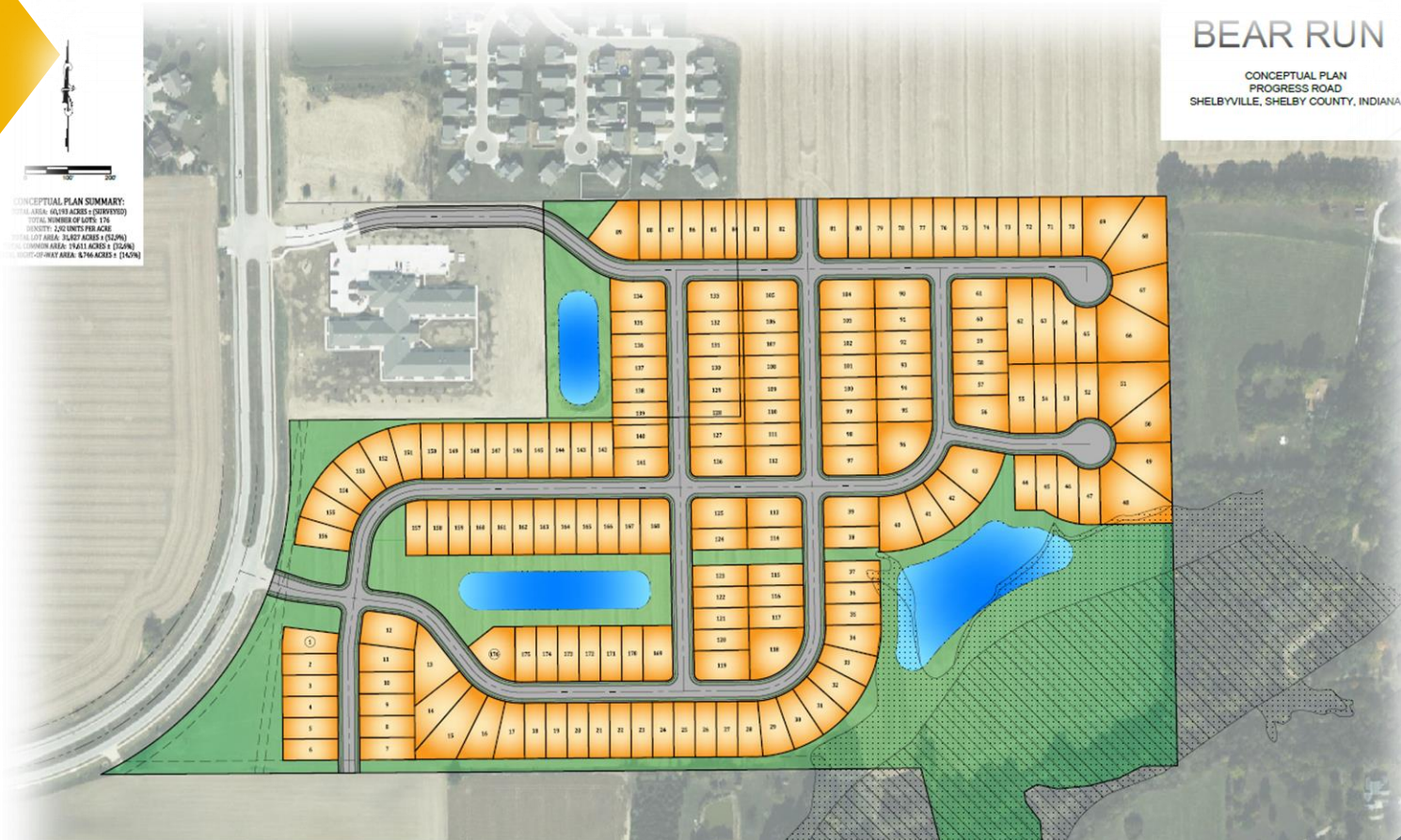
# BEAR RUN

## Area Map





# BEAR RUN APPROVED DETAILED DEVELOPMENT PLAN



PLANS PREPARED BY:

**BANNING**  
ENGINEERING

853 COLUMBIA ROAD, SUITE #101  
PLAINFIELD, IN 46166  
317-831-7000 FAX 317-831-7001



M/I HOMES



M/I HOMES

# BEAR RUN SUBDIVISION

Proposed Home Size Square footage

## Current Standard in Approved Lewis PUD

**1 Story: 1520 SF**

**2 Story: 1800 SF**

## Proposed Standard

**Min Floor Area: 1400 SF**

**Existing Standard of the Shelbyville  
UDO for R1 and R2**

**Min Floor Area: 1400 SF**



M/I HOMES



Welcome to  
M/I Homes

Welcome to better.

THANK YOU



M/I HOMES